

PCA CONTRACTS

- Algeria
- Burundi
- Cameroon
- Egypt
- Ethiopia
- Gabon
- Kenya
- Korea
- Kurdistan
- Kuwait
- Mongolia
- Nigeria
- Qatar
- Russia
- Saudi Arabia
- Tanzania
- Uganda

CONTACT US

SGS UGANDA LTD

2nd Floor Media Plaza

Plot 78, Kira Road, Kamwokya

P.O. Box 63

Kampala, Uganda

Phone: +256 392 739 965/6 ; +256 772 739 968

+256 776 739 967 ; +256 794 974 408

+256 794 974 466

Fax: +256 414 235 760

Web: www.ug.sgs.com

Email: elizabeth.birungi@sgs.com

barbara.sayuni@sgs.com

© SGS Group Management SA – 2016 – All rights reserved - SGS is a registered trademark of SGS Group Management SA

WWW.SGS.COM



THE PRE-EXPORT VERIFICATION OF CONFORMITY (PVOC) PROGRAMME IN UGANDA

WHEN YOU NEED TO BE SURE

SGS

SGS

THE PVOC PROGRAMME IN UGANDA

Starting from June 1st, 2016, Uganda National Bureau of Standards renewed Pre-Export Verification of Conformity to standards (PVoC) on imports to Uganda.

The Program requires that all regulated products to be imported to Uganda are assessed and a Certificate of Conformity issued to demonstrate the compliance of the products with the Local or approved International standards.

SGS has been confirmed as a provider of PVoC services worldwide for another 36 months.

BASIC FEATURES

- Goods imported into Uganda require a Certificate of Conformity (CoC);
- CoC is a mandatory customs clearance document for each consignment;
- Goods exempted from the program are still subject to UNBS destination inspection;
- Exporter is liable for any legal or economic consequences arising for goods shipped without the cover of a CoC;
- Responsibility of compliance lies with the supplier/exporter.

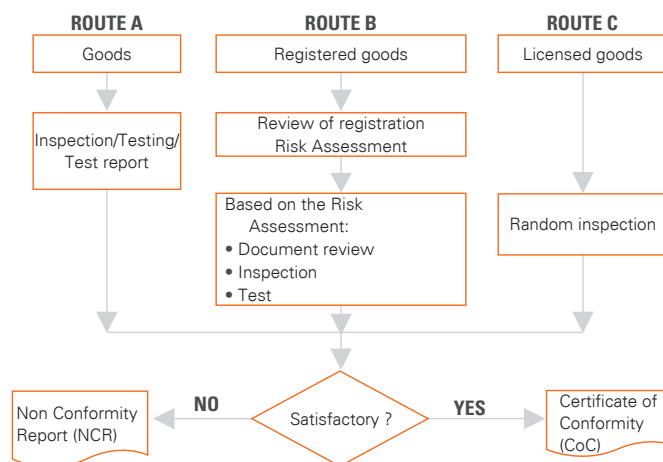
PVOC PROCEDURE

To obtain a CoC the importer/exporter must:

- Submit filled in Request for Certification Form (RFC) and a Pro-Forma Invoice to SGS;
- The above shall be complemented by description of goods and documents proving conformity such as test reports, data sheets, quality management system certificates if any, existing approvals etc;
- SGS confirms the route (see below) & standards applicable;
- SGS coordinates for product sampling & testing with an accredited or approved laboratory (if applicable);
- Please note inspection will be done after all the above requirements are met & payment made in full by the client.

ROUTES OF VERIFICATION

- Route A: For high risk products and supply chains;
- Route B: Suppliers declaration of compliance supported by evidence;
- Route C: Licensed products, manufactures only.



FEES STRUCTURE, USD

ROUTES	AD VALOREUM FOB VALUE, %	MINIMUM FEE	MAXIMUM FEE
A	0.500	235	3,000
B	0.450	235	3,000
C	0.250	235	3,000

- The above-mentioned fees cover the documentary verification and inspection of goods.
- The above fees do not include laboratory testing, sealing of containers, registration and licensing of products.
- Product registration and manufacturer licensing is to be quoted on a case-by-case basis.
- Testing fees charged on a case-by-case basis.
- The trade may be charged extra for re-inspection, should it prove necessary.

WHY SGS?

SGS has vast experience in delivering conformity assessment services, including in Africa and Middle East. We have an unparalleled network, local contract management, and a dedicated team of professionals. Together with superior software platform, our conformity assessment services ensure consistency, speed, efficiency and professionalism.

WE OFFER:

- Key Account Management in one of the countries or/and in our Contract Management Office in Kampala;
- One stop shop for all certifications worldwide;
- Immediate access to information about your order;
- Support in linking all the parties participating in the process;
- Facilitation of execution of your orders;
- Custom tailored solutions for your situations.

