

INTEGRATED SGS SERVICES FOR PRODUCTION

AN OVERVIEW OF SERVICES FOR THE PRODUCTION SECTOR

SGS provides proven technical solutions during the production stage of your project, regardless of the location. Our global network of offices and laboratories ensures that you have the expertise you need, right where you need it. We offer industry-leading services including:

COMMISSIONING SUPPORT

- Metallurgical start-up support and training
- On-site project expertise
- Optimization and definition of KPIs for plant operation
- Procurement and construction monitoring
- Site visits and progress reporting
- Construction monitoring
- Review of construction and commercial agreements
- Completion and progress reports

OPERATIONAL SUPPORT

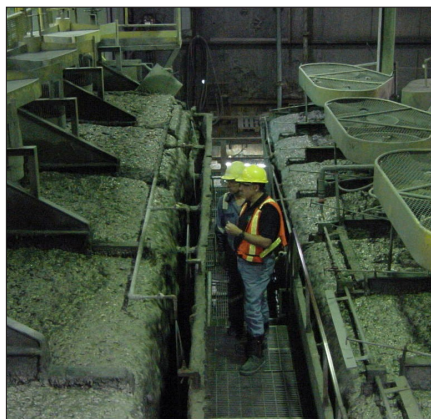
- Integrated on-site laboratory facilities to support grade control, plant operation and environmental programs
- Grade control and mine planning
- Geotechnical testing and rock mechanics
- Wear metal analysis in used oils



- Records management and verification
- Management and technical audits and reviews
- Materials handling and supplier audits
- Plant upgrades and improvements

IN-PLANT SERVICES (MILL)

- Metallurgical commissioning
- Audits and optimization programs
- Plant debottlenecking and trouble shooting
- Beneficiation
- Column and contact cell flotation, froth cameras
- Process control and advanced systems



- Metal accounting and monthly metal balances
- Slurry rheological assessments
- Plant design and efficiency review
- Retrofit engineering
- Corrosion and metal fatigue assessments
- Non-destructive testing and analysis

POWER MONITORING SERVICES

- Benchmark testing of all newly installed equipment
- Commissioning of all distribution equipment
- Grinding circuit audits
- Thermographic services



- Preventative maintenance of all power distribution plant
- BS EN 16001:2009 Energy Management audits

LABORATORY AND SAMPLING SERVICES

- On-site analytical and metallurgical laboratories
- Mobile laboratories for remote locations
- Proficiency testing programs
- Lot sub-sampling
- Auger and mechanical sampling systems
- Settlement and umpire services

ENVIRONMENTAL SERVICES

- Environmental baseline studies, monitoring and auditing
- Air, water and soil hazard analysis
- Water and effluent testing, treatment and management
- Industrial hygiene, silica, dust, air quality and noise analysis
- Water and effluent treatment programs
- Cyanide recycling and destruction
- Environmental mineralogy
- Acid rock drainage prediction and mitigation

- Acid sulphate solids and contaminated site rehabilitation
- Land reclamation and mine closure planning
- Greenhouse gas emission verification

GEOTECHNICAL SERVICES

- Site classifications (shallow footings) to AS 2870
- Geotechnical exploratory investigation to AS 1726
- Design/consultancy work for foundation structures and retaining wall structures
- Geotechnical failures analysis work
- Geotechnical instrumentation and monitoring programs

SAFETY SUPPORT SERVICES

- High pressure equipment verification and licensing
- Established safety management software
- Access control equipment (cards and kiosks)
- Development of training courses, interactive presentations and e-training tools



TRADE AND INSPECTION

- Toll milling support, smelter support and industrial product recycling
- Quality inspection
- Quantity assessment
- Visual inspection
- Loading supervision
- Moisture inspection
- Damage analysis
- Tally grading
- Weight verification and draft survey
- Stockpile inventory management

PAVEMENT SERVICES

- Design work for pavement layers/ thickness for infrastructure
- Assessment and rehabilitation to determine the causes of pavement structures failures



AUDITING AND CERTIFICATION

- BS 25999: Business Continuity Management
- BS EN 16001:2009 Energy Management
- GRI - Global Reporting Initiative and AA 1000 Assurance Standards
- ISO 9001:2008 Quality Management Systems
- ISO 1400:2004 Environmental Management Systems
- ISO 14064: Greenhouse Gas Accounting And Verification
- OHSAS 18001 Occupational Health & Safety Management Systems
- SA 8000 Social Accountability
- SQA – Supplier qualification audits



CONTACT INFORMATION

Email us at minerals@sgs.com
www.sgs.com/mining