



PCA CONTRACTS

- Algeria
- Burundi
- Cameroon
- Egypt
- Ethiopia
- Gabon
- Ghana
- Kenya
- Kurdistan
- Kuwait
- Mongolia
- Nigeria
- Qatar
- Saudi Arabia
- Tanzania
- Uganda

CONTACT US FOR MORE INFORMATION:

pca.enquiries@sgs.com

SGS CAMEROUN

176 rue Victoria - Bonanjo
B.P 12140 Douala Cameroun
Bureau : + 237 233 430 957/959
Fax : + 237 233 430 944
Email : gjs.cameroun@sgs.com

© SGS Group Management SA – 2016 – All rights reserved – SGS is a registered trademark of SGS Group Management SA.

WWW.SGS.COM



CAMEROON - PECAE PROGRAMME D'ÉVALUATION DE LA CONFORMITÉ AVANT EMBARQUEMENT

WHEN YOU NEED TO BE SURE

SGS

SGS



BACKGROUND

Starting 31/08/2016 “L’Agence des Normes et de la Qualité (ANOR) “ is implementing the “Programme d’Evaluation de la Conformité Avant Embarquement des marchandises importées en République du Cameroun (PECAE) “ to assess that all regulated imported products do comply with approved National Standards or Technical Regulations

THE OBJECTIVES

The “PECAE” aims to:

- Ensure the quality of products as well as the health, safety and environmental protection of Cameroun Consumers;
- Protect the public against substandard products that can endanger public health, safety and the environment.
- Protect local manufacturers against unfair competition from imported products which do not comply to local Standards.

GENERAL FEATURES

- Goods imported into Cameroun shall require a Certificate of Conformity (CoC);
- CoC is a mandatory Clearance document for each shipment;
- Exporter is liable for any or economic consequences arising from goods shipped without the Attestation de Conformite (AC);

PECAE PROCEDURE

Under PECAE, process might be initiated by Exporter at the country of supply or by Importer in Cameroun

- If the process is initiated by Importer with the “Déclaration d’Importation”, SGS Liaison Office in Cameroun will transmit all the corresponding SGS affiliate at the country of supply the documents submitted by Importer. This will lead on to the coordination of the intervention with exporter and (if need be) to request for missing documents.
- If the process is initiated by Exporter; he will submit to SGS the following documents:

- Request for Certification
- PROFORMA Invoice
- Quality Management System Certification (if available)
- Conformity Documents (test reports, quality certificates, analysis reports, etc...)
- Final invoice (required to issue AC)

To obtain evidence that all requirements are met in the applicable standards or technical regulations, goods must undergo one or a combination of the following verification process:

- Physical inspection
- Laboratory
- Factory audit
- Documentary verification

After verification process completed with satisfactory results, Exporter will submit his Final Invoice for the issuance of the Attestation de Conformité “AC”. For air shipments the AC will be issued based on the Proforma Invoice.

Based on the “AC”, ANOR will issue the “CoC” to Importer who will use it for Customs Clearance.

APPROVED LABORATORIES:

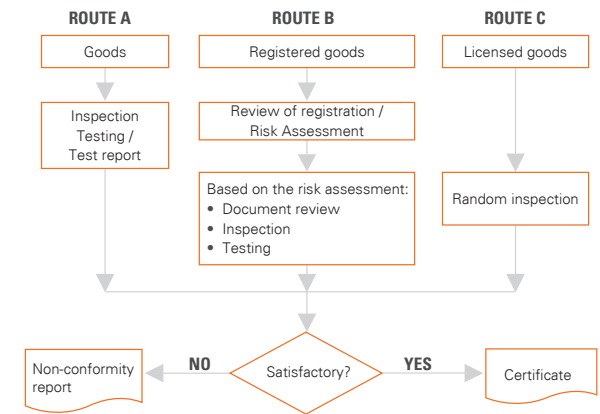
Approved laboratories under PECAE are as follows:

1. SGS laboratories.
2. Third party ISO/IEC 17025 accredited laboratory operating as per the ILAC guidelines.
3. Supplier laboratory provided that the test results are detailed as per the corresponding standard, that the laboratory holds a recognized quality certification system (such as ISO 9001..etc) and that the list of the equipment (model, serial number...etc) with the corresponding calibration records and are supplied to demonstrate laboratory capabilities for testing.

ROUTES OF VERIFICATION

PECAE covers three certification Routes as follows:

- ROUTE A: This Route is recommended for high risk goods and parties, non-registered/infrequent suppliers, Manufacturers of sensitive goods or shipments of heterogeneous goods;
- ROUTE B: This Route is recommended for Exporters with regular and frequent shipments of homogenous products
- ROUTE C: This Route is limited to Manufacturers and it does include factory audit



FEES STRUCTURE, USD

ROUTES	AD VALOREM FOB VALUE,%	MINIMUM FEE	MAXIMUM FEE
A	0.450%	300	7,000
B	0.400%	300	7,000
C	0.270%	300	7,000

- Testing: to be quoted on a case by case basis
- Sampling
- Container sealing
- Product Registration: \$ 375 for up to 15 line items; \$ 20 for every line item above 15 lines
- Manufacturers licensing

WHY SGS?

SGS has a vast experience in delivering conformity assessment services in Africa and Middle East. We have unparalleled network, local Contract management, and dedicated team of professionals. Together with superior software platform, it ensures consistency, speed, efficiency and professionalism.

WE OFFER:

- One-stop shop for all certifications worldwide;
- Key Account Management in one of the countries or/ and in our Contract Management Office;
- Immediate access to information about your order;
- Support in linking all the parties participating in the process;
- Custom tailored solutions for your situations.