

EXPLOMIN™ STANDARD

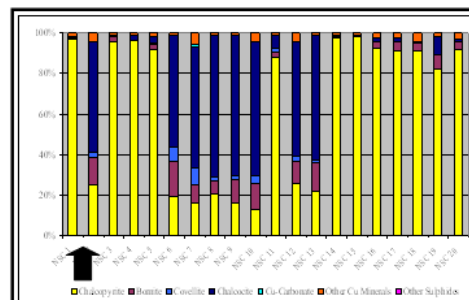
The EXPLOMIN™ products are a bulk mineralogical service. EXPLOMIN™ STANDARD is intended to add an additional layer of data for new and/or exploratory projects. EXPLOMIN™ STANDARD is the base EXPLOMIN™ product and, as a minimum, provides an EXCEL file, containing tabulated numerical data. The technical deliverables of this product include:

- Mineral identification
- Modal mineralogy
- Average grain size
- 3 Elemental Departments *
- Downhole logplot with geochemistry
- Downhole logplot with field parameters (e.g. grain size, bulk density, structural info)

* Department is the distribution of an element though various mineral phases present in the sample.

EXPLOMIN™ Report: Mineralogy, Abundance, Size & Department

Mineralogy	%	Av. Grain Size (µm)
Chalcopyrite	0.72	13
Bornite	0.20	8
Covellite	0.04	8
Chalcoite	0.83	14
Cu-Carbonates	0.01	5
Other Cu Minerals	0.20	7
Galena	0.00	0
Sphalerite	0.01	17
Pyrite	4.46	63
Molybdenite	0.00	0
Other Sulphides	0.02	5
Quartz	33.17	23
K-Feldspar	12.89	9
Plagioclase	8.03	10
Garnet	0.00	0
Amphibole	0.04	6
Pyroxene	0.00	0
Kaolinite	0.92	5
Epidote	0.00	4
Titanite/Sphene	0.00	4
Muscovite/Clays	38.81	13
Biotite/Phlogopite	0.88	5
Chlorites	0.88	9
Other Silicates	0.00	0
Fe-Oxides	0.06	7
Goethite (St)	0.05	7
Other Oxides	0.34	17
Carbonates	0.04	8
Baite	0.14	8
Phosphates	0.07	9
Other	0.08	12
Total	100	



Cu Department	%
Chalcopyrite	24.98
Bornite	13.43
Covellite	2.70
Chalcoite	54.27
Cu-Carbonates	0.38
Other Cu Minerals	4.24
Other Sulphides	0.00



EXPLOMIN™

Sample ID Ni Cu ore

MINERALOGY AND MODAL ABUNDANCE

TABLE 1

Sample ID	Ni Cu ore
Gersdorffite	0.00
Chalcopyrite	3.82
Cubanite	0.39
Other Cu Minerals	0.08
Pentlandite	2.15
Violarite	0.28
Pyrrhotite/Troilite	18.06
Other Sulphides	0.01
Pyroxene/Amphibole	10.32
Quartz	14.29
Feldspar	16.22
Mica/Clay	30.68
Fe-Oxides	2.76
Apatite	0.18
Ilmenite	0.54
Other	0.23
Total	100

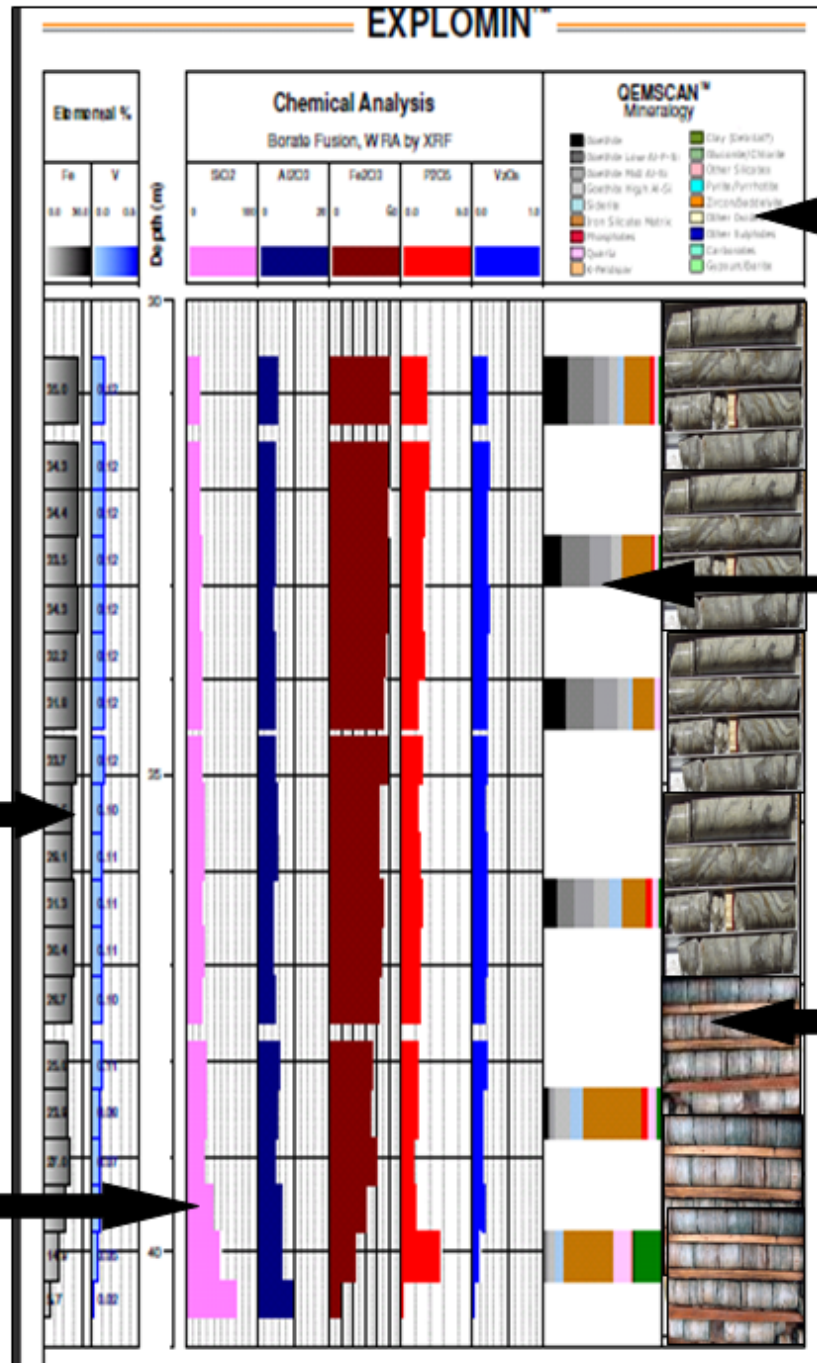
FIGURE 1

GRAIN SIZE (in µM)

Sample ID	Ni Cu ore
Apatite	25
Feldspar	22
Quartz	17
Pyrrhotite/Troilite	15
Ilmenite	14
Pyroxene/Amphibole	14
Other	13
Chalcopyrite	11
Mica/Clay	11
Pentlandite	11
Fe-Oxides	8
Violarite	7
Other Cu Minerals	7
Cubanite	6
Other Sulphides	6
Gersdorffite	0
Average (Particle Size)	21



EXPLOMIN™ STANDARD Report Example Downhole logplot



EXPLOMIN™ DEPARTMENT

Sample ID Ni Cu ore

Ni-Department

Ni Cu ore	
Gersdorffite	2.73
Pentlandite	89.11
Violarite	8.15
Total	100.00

S-Department

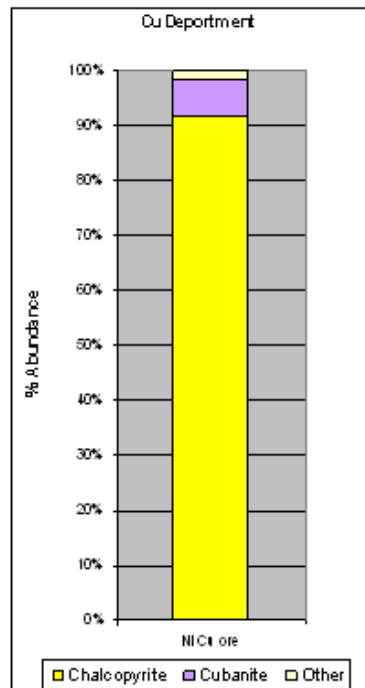
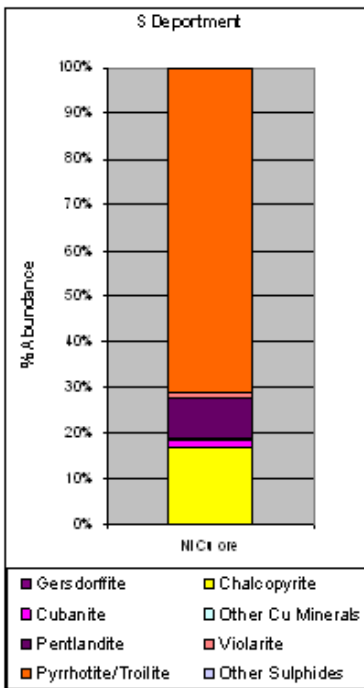
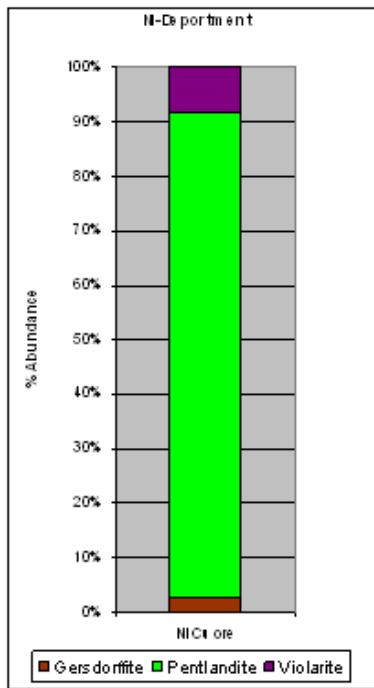
Ni Cu ore	
Gersdorffite	0.00
Chalcopyrite	16.83
Cubanite	1.76
Other Cu Minerals	0.15
Pentlandite	8.68
Violarite	1.38
Pyrrhotite/Troilite	71.19
Other Sulphides	0.02
Total	100.00

Cu-Department

Ni Cu ore	
Chalcopyrite	91.8
Cubanite	6.4
Other	1.8
Total	100.00

**Assumes that Ni is not in silicate and/or Fe-Sulphides*

**Other Sulphides includes trace Sphalerite*



CONTACT INFORMATION

Email us at minerals@sgs.com
www.sgs.com/mining

WHEN YOU NEED TO BE SURE

